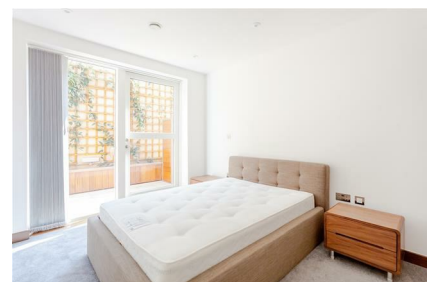
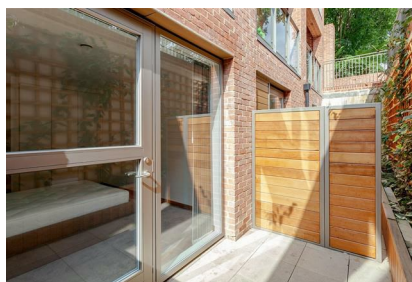


Parkheath

Sold on Service

Maygrove Road NW6

£2,100 PCM (£485 per week) - Camden Band C



Superb 1 bedroom duplex apartment

Ground and lower ground floor

Reception room with wooden floors & door to balcony

Bedroom with fitted storage & door to courtyard patio

Short walk of West Hampstead Thameslink & Kilburn underground

Private courtyard patio and balcony

Fully integrated open plan kitchen

Modern bathroom suite & guest WC

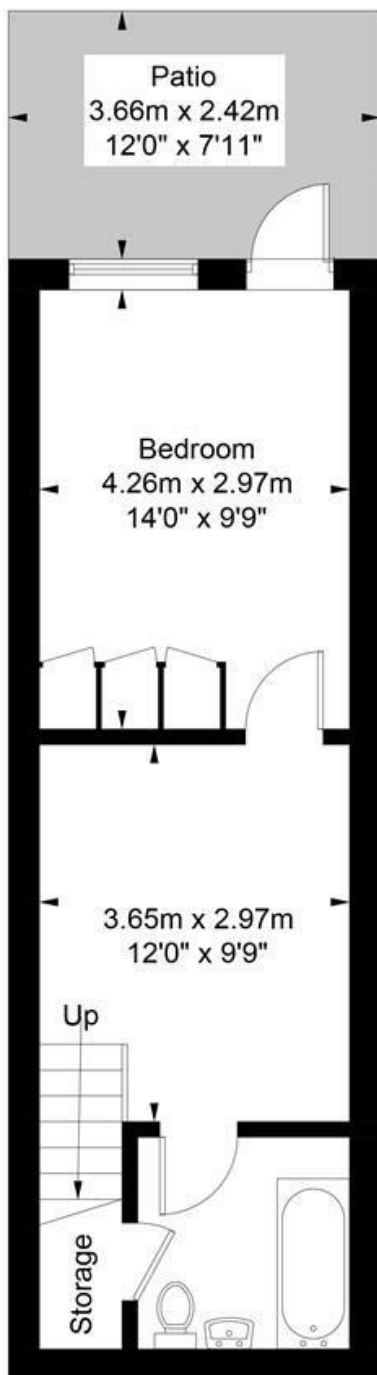
Communal grounds and residents gymnasium

EPC rating B / Council tax: Camden band C

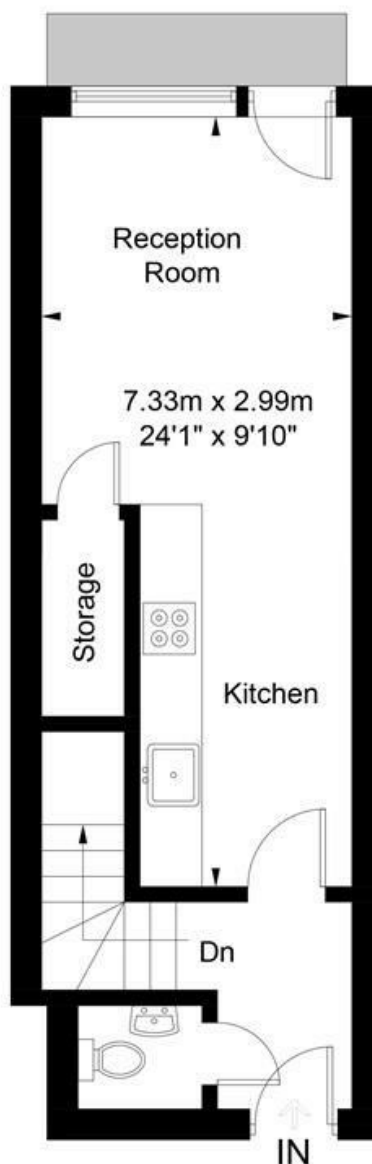
West Hampstead Office 020 7794 7111

Maygrove Road

Approximate Gross Internal Area = 59.3 sq m / 638 sq ft



Lower Ground Floor



Ground Floor

Illustration for identification purposes only, measurements are approximate, not to scale. FloorplansUsketch.com © 2017 (ID360087)

The particulars do not constitute part of an offer or contract. The particulars, including text, photographs and plans, are for the guidance only of prospective purchasers/tenants and must not be relied upon as statements of fact. The descriptions provided therein represent the opinion of the author and whilst given in good faith should not be construed as statements of fact. Nothing in these particulars shall be deemed a statement that the property is in good condition or otherwise or that any services or facilities are in good working order. All measurements are approximate